

Priyadarshini College Of Engineering, Nagpur Online Staff/Student Web Crawler

Prof. Ms. Manali R. Raut, Trupti P. Lokhande, Karishma D. Godbole, Shruti J. More, Sunena S. Hatmode, Nikita D. Tibude

Assistant professor, Department of Computer Technology, Priyadarshini College of Engineering,
Nagpur, Maharashtra, India.

Department of Computer Technology, Priyadarshini College of Engineering, Nagpur, Maharashtra, India.

truptilokhande281@gmail.com, karishmagodbole25@gmail.com

moreshruti33@gmail.com, sunenahatmode369@gmail.com

nikitatibude04@gmail.com, manaliraut2@gmail.com

Abstract: PCE Staff/Student Portal provides a simple interface for maintenance of student-faculty information. It can be used by scholastic institutes or colleges to maintain the lettering of students readily. The creation and management of rightly, update tidings regarding a student's academic career is critically vital in the university as well as colleges. Student vital system deals with all kind of student details, alumni student data, college details, course details, batch details, placement details and workshop attended other resource related details too. All these will be achievable through a safe, online alliance embedded in the college's site. The Staff / Student Portal is the commonly used phrase to describe the login page where student can provide a user name and password to gain access to an scholastic organization's programs and other learning related materials. For sample a novice who has enrolled in an online certification program may utilization a student portal to ingress online course parent materials, such as articles, lectures and videos hosted on the college's server. Staff/student portal is also used to provide vital about the college, special events, course details, calendars, academic resources and contact material.

Keywords: Database, HTML, PCE Staff/Student Portal, College Portal, SQL.

I. Introduction

The PCE Staff/Student Portal is a web portal where all information and all services that students need can be found in one place. The Portal can be used by all student registered at PCE Staff/Student and all faculties of PCE portal. This venture is an online portal for students and faculty. This system conceded college faculty of important data gathered. It consists of a faculty login along with student login. In this application all data available such as Alumni student, T&P data, Paper Publication data and Workshop Attended, All the data stored on the portal. The impingement of computers on our lives today is probably much more than we are actually known to. Confiscating good information and transforming it swiftly into products than consumers craving to closeout is the cardinal key to staying in business and this all is done coeval using Computers and Application Software. College Portal defines as an application (more likely web-based), that endow abilities for multiple users with different permission levels to manage (all or a section of) content, data or information of a website project, or internet / web application. The software scheme Managers to plan and control the organizational operations and to respond to changing market conditions. It endow a regular flow of vital for managerial decision-making and control.

A) Objective

The main objective of this system, is to reduce the regular use of time during maintaining the records of college. Separate divisions are providing to maintain the records of teachers students students. Our System also endow an foolproof way not only to automate all functionalities of a college, but also to endow full functional reports to top management of college with the finest of details about any facet of college. In other words, our college portal has, following objectives: Simple database is maintained. Easy operations for the operator of the system. User interfaces are user friendly and tempting; it takes very less time for the operator to use the system. The aim is to design a college website which contains update vital of the college that should improve efficiency of college record management.

B) Problem Statements

There are many case found in the todays portal system. The problems created in the existing system enforced us to develop the new system which minimize the problem of the existing system. Now a days the

system in college like entering papers details in only department level of papers data is done manually which consumes lots of time .It's application depends works on minimum peoples that is department level.

The objective of PCE Staff/Student portal is to endow an online web based solution for academic use. In this application all data available such as Alumni student, T&P data, Paper Publication data and Workshop Attended. Foolproof to use futures help our students and staff organize and access information about all aspects of the Alumni student, T&P data, Paper Publication data and Workshop Attended in college. Problem Statement Today's education photoplay is rapidly changing and demanding. The system commands greater levels of communication between college, student and faculty members to have perfect use of resources. Today's industry talent commands are float with more and more skills requirements in all fields. Colleges and institutions generative creative students' needs concerned approach on such talents and industries so as assist best of benefits to their candidates passing out. Online College Portal is a system fulfilling these claim and enacting as a bridge of communication amongst students, faculties and colleges.

II. Litration Review

The GHRCE Student Portal is a web portal where all information and all services that students need can be found in one place. The information on the Student Portal is for active students at GHRCE campuses. Student Portal is a system for learning and study administration that is used by students, teachers, and administrators at GHRCE Campus. What help texts are displayed depends on whether you are logged in or not and whether you are a student or an administrators. Keeping the same in mind, we the Rasoni Group have developed learning platforms for the students and learners to aid in establishing new milestones, successful ventures and flourishing lives. Online College Portal (OCP) provides a simple interface for maintenance of student–faculty information. It can be used by educational institutes or colleges to maintain the records of students easily. The GHRCE Student Portal is a web portal where all information and all services that students need can be found in one place. The Portal can be used by all student registered at GHRCE and all faculties of GHRCE. Today's era maintaining manually record of particular person attendance is most difficult task in the industries, universities or working places[1]. It help to generate monthly monitoring sheet. Manual attendance system required lot of paper work and calculations and there will be great chances of errors. To save the time of maintain lecture swapping data and average attendance of each student Online College Portal system aims to improve the efficiency of college information management, and the main function is managing and maintaining information[2]. The administrator and students are two major functional requirements in the system. The Administrator will be given more powers (enable/disable/ update) than other users. The student and staff information system that helps to users can easily store the students and staffs information through online[3]. The user can easily store and retrieve the data by department wise through online. This system helps the user to generate the dynamic reports. So the user can easy to interact with the system to store and access the resources through internet or intranet. This system helps Company to access the student information with regards to placement[4]. Computer based information system are designed to improve existing system. Company can notify the students about the recruitment online via sending message using message notification gateway.

III. Proposed Methodology

The objective of PCE Staff/Student Portal is to provide an online web based solution for academic use. In this application all data will be available such as Alumni student, T&P data, Paper Publication data and Workshop Attended. It is Easy to use. In future it helps our students and staff to organize and access information about all aspect of the Alumni student, T&P data, Paper Publication data and Workshop Attended in college. This website provide a way for student and faculty to communicate to each other .this will solve all drawbacks of manual process ,increase the efficiency and speed up all works to be completed. At college managements side a person can view the most important student and staff data such as Alumni, paper publication etc. Every student and staff will provide with unique login id and password. Also all the data will be at least once the validated from the college database .For this purpose the college database is being retrieved directly. So this process also helps in maintaining consistency and integrity. The student and staff information system that helps to users can easily store the students and staffs information through online. The user can easily store and retrieve the data by department wise through online. This system helps the user to generate the dynamic reports. So the user can easy to interact with the system to store and access the resources through internet or intranet.

Consider following figures for PCE staff/Student Portal home page, photo Gallery ,alumni Registration, Staff Registration, Student Registration,Methodology and Sequence diagram are created. All figures easily understands the concept of our project.

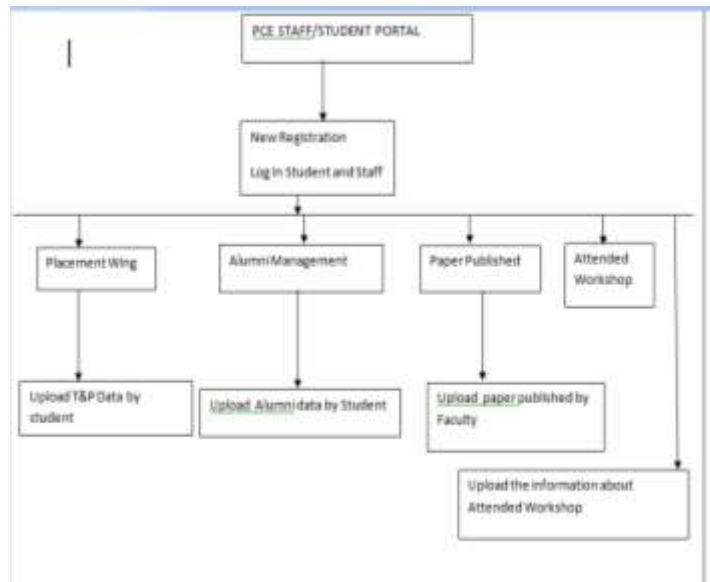


Fig 6. Methodology of PCE staff/Student Portal

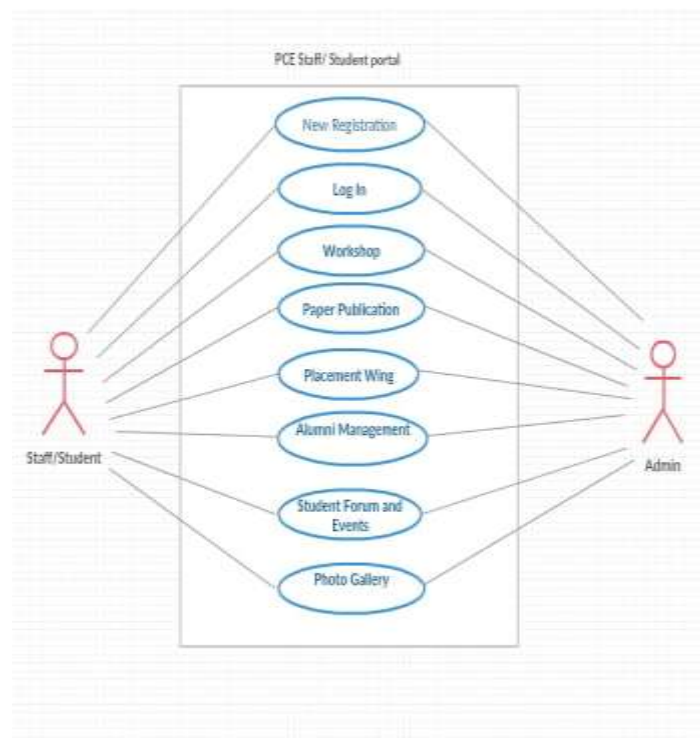


Fig 7. Use case Diagram of PCE staff/student portal



Fig.1. Home Page

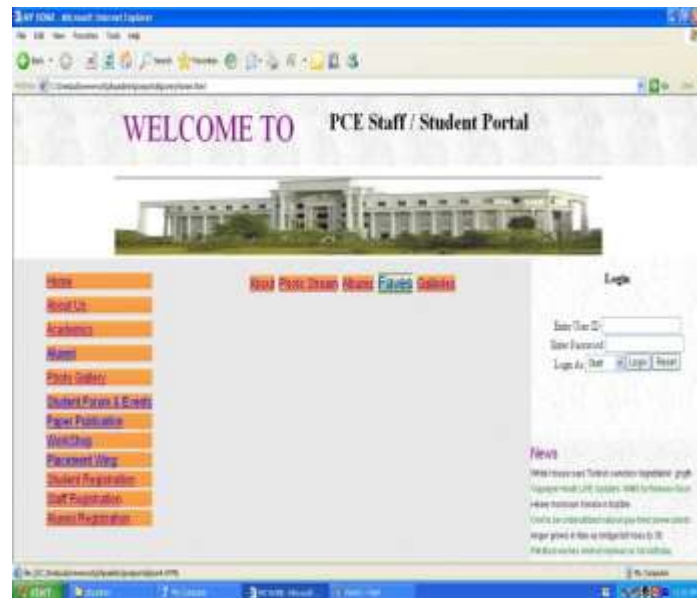


Fig 2: Photo Gallery

A) Student interface

In the student module they can see their research papers, placements data and Alumni of student data. They can view the all papers which are published by student or faculty of our college. Students can upload their papers and also placed student upload their information .all the information show to authorized person.



Fig 3: Student Registration

B) Faculty module

In the Faculty module they can see their research papers, placements data and Alumni of student data. They can view the all papers which are published by student or faculty of our college. Faculties can upload their research papers. All the information show to authorized person.



Fig 4: Staff Registration

C) Admin module

Admin module is one on the main module needed in the system it has various modules such as follows: "Alumni and student module" The objective of this application is to allow old and new students of a college to communicate with each other. This allows students to know about each other and their current activities. The Alumni/Students can register themselves and after the approval from the administrator, they can logon into their account and can send mails, post queries, update their profiles and even search for other student details. The module provides mail and query functionalities. . "T&P Module" Training and placement is a system for providing training to academic students. Placement is an active after completion of training. Our Application will handle the information of students, Companies, job provider (Placement Officer) etc. Provide better service to students and HR Manager (Company). Login Form Registration, For New User

Administrator, Menu Form User (Student) Menu Form (User-Side) Search Placed StudentsAdmin side Student Registration Form User Side and Student Registration Form. “Paper publication module “The prime purpose of us to provide assistance to aspirant via research scholars, professors, big achievers to metamorphose their revived inventive works into forms like case studies, meta-analysis, empirical studies and theoretical articles. All the Published papers are stored on a server.

- Home
- Upload Papers
- Published Papers
- Contact Us

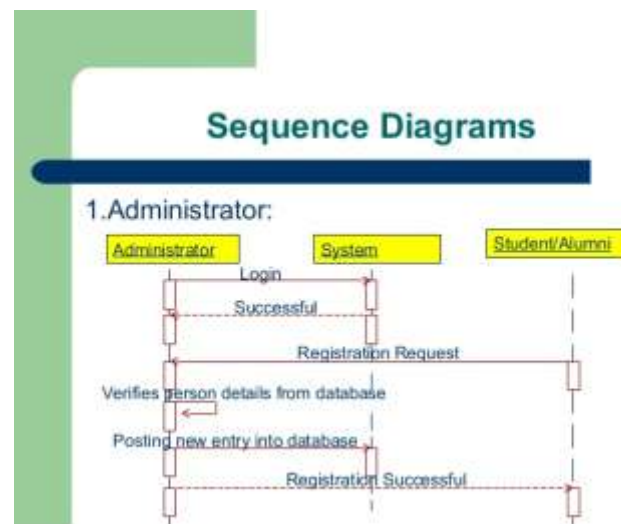


Fig. Sequence diagram of registration successfully



Fig 5:Alumni Registration

D)Technology used

1. Html

HTML is a hypertext mark-up language which is in reality a backbone of any website. Every website can't be structured without the knowledge of html. If we make our web page only with the help of html, than we can't add many of the effective features in a web page, for making a web page more effective we use various platforms such as CSS. So here we are using this language to make our web pages more effective as well as efficient. And to make our web pages dynamic we are using Java scrip.

2. Css

CSS Stands for "Cascading Style Sheet." Cascading style sheets are used to format the arrangement of Web pages. They can be used to define text styles, table sizes, and other aspects of Web pages that previously could only be defined in a page's HTML. The basic cause of CSS is to separate the gratified of a web document (written in any markup language) from its bestowal (that is written using Cascading Style Sheets). There are hug amount of asset that one can extract through CSS like improved content convenient, better flexibility and moreover, CSS gives a level of control over various presentation features of the document. It also helps in reducing the complicated and helps in saving overall presentation time. CSS gives the option of selecting various style artifice and rules according to the necessity and it also allows the same HTML document to be presented in more than one irregular style.

3. PHP

PHP code may be embedded into HTML code, or it can be used in combination with various web template systems, web content management systems, and web frameworks. PHP code is usually processed by a PHP interpreter implemented as a module in the web server or as a Common Gateway Interface (CGI) executable.

IV. Conclusion

In conclusion this project is one of the most crucial stride taken in the development of a student and makes the staff very prompt regarding students and college day to day work. This paper aid in automating the existing manual system. This is a paperless work. It can be monitored and guarded remotely. It cut down the man power required and provides accurate information. Malpractice can be pare. All years together huddled information can be saved and can be accessed at any time. For this reason the data stored in the repository helps in taking decision by management. So it is improved to have a Web Based system. All the stakeholders, faculty and authority can get the required information without delay. This system is crucial in the colleges and universities.

References

- [1]. <http://ghrce.edu.in/portal/forum.aspx>
- [2]. <http://www.projectsjugaad.com/2011/05/online-college-portal-project/>
- [3]. <http://ycceresearchportal.org>
- [4]. https://www.google.com/search?ei=oN40XNqJNcvlvASK5Z2QBA&q=ycce+web+portal+abstract&oeq=ycce+web+portal+abstrat&gs_l=psy-ab.1.0.33i10.9874.12053..16959...1.0..0.349.846.2-2j1.....0.....1..gws- wiz.....0i71.OS3X1xgPc7A
- [5]. <http://inpressco.com/wp-content/uploads/2015/04/Paper69976-980.pdf>
- [6]. <http://rgcer.edu.in/rgcer/electrical-abstract-project-details>
- [7]. <http://academicscience.co.in/admin/resources/project/paper/f201804161523881757.pdf>
- [8]. <http://www.projectsjugaad.com/2011/05/online-college-portal-project/>