

P63, a marker of the proliferative basal layers of skin epithelia and the hair follicle

Jinhuan Zong, Lijun Jiang, Shanfeng Chen, Chengye Ma, Hongjun Li,
Dongliang Zhang*

School of Agricultural Engineering and Food Science, Shandong University of Technology, No. 12 Zhangzhou Road, Zhangdian District, Zibo, Shandong Province, China
Corresponding author: Dongliang Zhang

Abstract: In this experiment, we investigated that the P63 protein varied in normal hair cycle and hair regeneration process after hair follicles were thoroughly destroyed by cyclophosphamide. Regeneration of the destroyed cells is an optimal model for the research of cell proliferation. BrdU was used to identify which part of skin was destroyed and the new cells regenerated (without or with new cells) in this CYP-injection induced dystrophy. The new cells in hair cycle were also labeled by BrdU. P63-positive cells and new cells were identified at basal layers of skin epithelia and outer root sheath of hair, which provided an evidence for the research result that the p63 is a marker of the proliferative basal layers of skin epithelia. IHC results showed that less p63-positive cells appeared in the in the resting phase (telogen), and new cells also significantly decreased in this phase. Much more p63-positive cells appeared in later anagen than early anagen, but reverse situation happened to the high proliferative cells (marked by BrdU). Most p63-positive cells congregated along the inner side of the hair matrix, whereas the new cells scattered in the hair matrix at anagen phase. These results suggested that p63 is not sufficient to be a marker of high proliferative cells of the hair follicles.

Keywords: p63 protein cyclophosphamide apoptosis 5-bromodeoxyuridine

Date of Submission: 08-09-2018

Date of acceptance: 24-09-2018

I. INTRODUCTION

Hair is the unique organ could repeat the regeneration through the entire mammalian life. Hair, its stem cells that locate in the follicle bulge are regulated by the surrounding microenvironment, is an important model for organ regeneration.¹ The stem cells are also the source of high proliferative cells. Process of hair regeneration in wound healing is typical model of organ regeneration. Originating from cells outside of the hair follicle stem cell niche, new follicles will form at the middle of wounded part. The new follicles arose from cells in the epidermis and/or upper portion of the follicle (infundibulum). Both of those areas are occupied by epidermal stem cells that normally undergo epidermal differentiation.²

Processes of normal hair cycle and wound-induced hair regeneration are related with the epidermal stem cells, transiently amplifying cells and differentiating keratinocytes. Here we simulated the process of hair regeneration in wound healing by the recovery process which induced by cyclophosphamide (CYP). Cyclophosphamide was listed as one of the most careladen side effects of cancer therapy by the National Coalition for Cancer Survivorship and it could induce the organ apoptosis including hair loss (Chemotherapy-induced alopecia).³ Few days after drug administration, new hair would grow out even without any treatment. The process of hair regeneration was a valuable model for investigating the relation between hair regrowth and epidermal stem cells. In this experiment, p63 that strongly expressed in epithelial cells was used as a marker of the proliferative basal layers of skin epithelia, including the hair follicle.⁴ P63 has been reported to be essential in the development of epithelia and is mainly expressed by basal and myoepithelial cells,⁵ which is also expressed in many normal human tissues including prostate basal cells, uterine cervix or urogenital tract.⁶ At the gene level, p63 belongs to the p53 family of transcription factors and shares high homology with the other family members.⁷ It contains two different promoters and expresses at least six major transcripts that lead to two fundamentally different kinds of proteins. Three of the p63 isoforms (TAp63) encode proteins with roles of transactivation and induction of apoptosis, other three isoforms (Δ Np63) lack the acidic amino (N)-terminal transactivation domain and exert inhibitory effects.⁵

BrdU immunohistochemistry (IHC) was performed to detect the proliferative cells in basal layers and hair follicle in chemotherapy induced alopecia. P63 IHC result was also checked. Hematoxylin and eosin (H&E) staining was used to investigate the morphology change of the damaged hair follicles.

II. MATERIALS AND METHODS

Main experiment process

8-week-old B57CL/6 mice that were purchased from Danhan Biolink Inc. (South Korea) were used in this experiment. Mice were divided into 4 groups numbered #1, #2, #3 and #4, each group had 4 mice. Groups of #1 and #2 were control groups and the other two groups were experimental groups. 10 days post depilation, those two experimental groups were injected by cyclophosphamide (200mg per kilogram body weight). Mice of control groups were sacrificed at 10, 15, 20 and 25 days post depilation and mice of CYP-injection group were sacrificed at 15, 20, 25 and 30 days post depilation. The full-thickness back skins were taken for experiments. Mice of #1 and #3 groups were served as western and immunohistochemistry (IHC). The other two groups were served as BrdU IHC. Two hours before killing the mice of #2 and #4 groups, we injected 5-bromodeoxyuridine (BrdU) into mice for detecting the cell proliferation, BrdU is efficient in identifying S-phase cells.⁸ Number of labeled cells was calculated. Hematoxylin and eosin (H & E) staining was used to observe the appearance of skin section.

Hematoxylin and eosin staining

Mice were sacrificed and skin samples were fixed with 0.4% formalin and 80% ethanol dissolved in distilled water, at 4°C. Two hours later, samples were transferred in turns into the following solutions, 90% ethanol, 100% ethanol, half ethanol and half xylene (v/v), half xylene and half paraffin (v/v), paraffin, each step spent 1 hour. Embedding and slicing were subsequently performed.

Sections were dyed by following steps: stained by hematoxylin solution (Sigma, USA), rinsed in distilled water, differentiated with 0.1% hydrochloric acid, rinsed in distilled water, dipped into saturated Li₂CO₃ for 30 seconds and stained by eosin for 1 minute.

Incorporating BrdU and immunohistochemistry

Mice were injected intraperitoneally with BrdU in single doses of 200 mg per kilogram body weight.⁹ IHC (Immunohistochemistry) steps were done as follow: Tissue sections were deparaffinized, rehydrated, and equilibrated in PBS for 10 min at room temperature. Sections were blocked with 10% normal cow serum (Santa Cruz Biotechnology, Inc. USA) at room temperature for 20 min.¹⁰ and then incubated with anti-p63 (A4A) dissolved in PBS (0.05% tween 20, pH7.4), at 37°C for three hours. After rinsing three times with PBS, biotinylated rabbit anti-mouse IgG (Santa Cruz Biotechnology, Inc. USA) was used as a secondary antibody. Finally, 3,3'-Diaminobenzidine (DAB) (Sigma, USA) was used as a color-developing reagent.¹⁰

III. RESULT

H&E staining

The most easily detectable and intuitive morphological sign of CYP-induced dystrophy of hair follicles is the disruption of melanin accumulation and transfer.¹¹ Five days post depilation, mice treated by CYP showed broadened out root sheath, tortured hair shaft and blurred hair follicle. 15 days post depilation, hair follicles showed a shortening of hair length and decrease in size of the hair bulb due to the massive apoptosis in the hair matrix (Figure 1E).¹² Hair follicle apoptosis was induced by the CYP which blocked nutrition transportation and thoroughly destroyed the hair follicles (Figure 1F) at day 20 post depilation. Nearly all hair shafts were destroyed and faded away, withered hair follicles with clumping of melanin inhabited in middle part of skin. Much more apoptotic hair follicles in CYP-induced alopecia than the withered hair follicles which resided in telogen of normal hair cycle (Figure 1B and F). At day 25 post depilation, many hair follicles were consisted of larger hair bulbs, internal root sheaths, and thicker outer root sheaths, which indicated that structure of hair follicles recovered (Figure 1G).¹³ The CYP-treated mice experienced a shorter interval from hair apoptosis to maximal regrowth (Figure 1E, F and G) than control (Figure 1A, B, and C).¹⁴ Ectopic melanin appeared in or out of the hair follicles even hair shafts obtained a good recovery situation (Figure 1H).

Incorporating BrdU and immunohistochemistry

Number of BrdU-positive cells had no significant difference between control and CYP-injection groups in each growth phases, most positive cells located in stratum granulosum, stratum spinosum and basal stratum of epidermis (arrows in A, D, G, J and M, P, S, V of Figure 2). BrdU-positive cells scattered in the hair matrix and were also observed in out root sheath at the catagen, new anagen and later anagen. It was widely recognized that a population of multipotent stem cells was localized to the bulge region of the hair follicle and protected from external damage, those stem cells participated in normal follicular growth/rest cycling.¹⁵ We could not found positive cells in the middle part of hair follicles at telogen; those apoptotic hair follicles which moved upward had no labeled cells (arrows in E and Q of Figure 2). Arrow of Figure 2Q is the ectopic melanin.

New cells resided in the hair follicle were impaired in CYP-injection group at 15 days post depilation (catagen) because CYP metabolites acted as alkylating agents of cross-linking of DNA strands (Figure 2M and N)

11. BrdU-positive cells were destroyed in the bottom of hair follicles at 20 days post depilation (Figure 2R). Surprisingly, BrdU-positive cells appeared in new hair follicles (Figure 2N), which means new cells did not come from the former hair follicles which were utterly damaged.

Average number of BrdU-positive cells per hair follicle was calculated, result was shown in Figure 2Y. Number of those positive cells decreased with the aggravation of CYP-induced damage and responded to the damage at catagen (15 days post depilation) and telogen (20 days post depilation). CYP-injection group had more BrdU-positive cells than control group in new anagen and in later anagen.

P63 immunohistochemistry

Result showed that epidermis labeled with p63, those p63-positive cells were observed in basal and suprabasal layers of epidermis¹⁶. Number of p63-positive cells in epidermis did not vary even in control CYP-injection groups (Figure 3 A, D, G, J, M, P, S and J). Although CYP induced dystrophy and hair follicle regression,¹⁷ epidermis of CYP-injection group still normally possessed the p63 protein (Figure 3M, P, S and V). P63-positive cells were detected in hair follicle epithelial and also observed in the sweat glands and the root sheaths (arrows of Figure 3B, E, H and K) in control group. 18 Positive cells that resided beside the middle part of hair shaft were also intact in control and CYP-injection groups (arrows of Figure 3B, E, H, K, N, Q, T and W). Contrasting to the p63-positive that existed in hair matrix in normal hair cycle, p63-positive cells of CYP-injection group located in hair matrix were destroyed in catagen (Figure 3O) and telogen (Figure 3R). Those cells nearly obtained complete recovery at new anagen (Figure 3U) and later anagen (Figure 3X). Some cells possessed p63 in out root sheath and apoptotic dermal papilla (arrows of Figure 3F) in telogen phase of control group, this illuminated p63 participated in the activation process of hair follicle. High density of p63-positive cells was found in hair matrix especially beside the edge of dermal papilla in catagen, early anagen, and later anagen at control groups. P63-positive cells had the same position in early anagen and later anagen at CYP-injection groups. It is impossible for the thoroughly destroyed papilla to give birth to new hair in our experiment, so mesenchymal and bulge (Figure 3O and R) which obtained some p63-positive cells were the origin of new hair follicle.

Average number of p63-positive cells per hair follicle was calculated to represent the degree of p63 recovery (Figure 3Y). Number of p63-positive cells of CYP-injection group was significantly different at four cycle phases. Hair follicles of CYP-injection group rapidly obtained more p63-positive cells than control group at the anagen phase.

Discussion and ending remark

15 days after CYP-injection hair follicles thoroughly destroyed by cyclophosphamide (200 mg per kilo gram body weight). New hair follicles that originated from the bulge were going to produce the new intact hair with ectopic melanin beside the hair shafts 25 days after injection. Not all of the p63-positive cells at the upper part of skin had been destroyed. P63-positive cells appeared in the new hair follicles at 20 days post depilation. BrdU was used to identify the new cells and the positive cells scattered in the hair matrix at catagen and early anagen in control groups. The high density of p63-positive cells was found in hair matrix especially beside the edge of dermal papilla in catagen, early anagen, and later anagen at control groups. The new cells appeared not in the same position with p63-positive cells, so p63 is a marker of the proliferative basal layers of skin epithelia, not including the hair follicle in the hair cycle. In CYP-injection groups, BrdU-positive cells scattered in hair matrix in early anagen, but no positive cells were detected in later anagen at the same position in later anagen. Most p63-positive cells congregated at the inner edge of the hair matrix (arrow of Figure 3X), but new cells (labeled by BrdU) scattered in hair matrix. The p63 was not a proper marker of high proliferative cells for the hair follicles, it just was a marker of the proliferative basal layers of skin epithelia, including outer root sheath.

Acknowledgements

This work was supported by the Shandong Provincial Natural Science Foundation, China (ZR2017MC073).

REFERENCE

- [1] Plikus M V, Mayer J A, de la Cruz D, et al. Cyclic dermal BMP signalling regulates stem cell activation during hair regeneration. *Nature* **451** (2008) 340-344.
- [2] Ito M, Yang Z X, Andl T, et al. Wnt-dependent de novo hair follicle regeneration in adult mouse skin after wounding. *Nature* **447** (2007) 316-U314.
- [3] Wang J, Lu Z, Au J L S. Protection against chemotherapy-induced alopecia. *Pharm. Res.* **23** (2006) 2505-2514.
- [4] Senoo M, Pinto F, Crum C P, et al. p63 Is Essential for the Proliferative Potential of Stem Cells in Stratified Epithelia. *Cell* **129** (2007) 523-536.

- [5] Ivan D, Diwan A H, Prieto V G. Expression of p63 in primary cutaneous adnexal neoplasms and adenocarcinoma metastatic to the skin. **Mod. Pathol.** 18 (2005) 137-142.
- [6] Burstein D E, Nagi C, Kohtz D S, et al. Immunohistochemical detection of GLUT1, p63 and phosphorylated histone H1 in head and neck squamous intraepithelial neoplasia: evidence for aberrations in hypoxia-related, cell cycle- and stem-cell-regulatory pathways. **Histopathology** 48 (2006) 708-716.
- [7] Sayan B S, Sayan A E, Yang A L, et al. Cleavage of the transactivation-inhibitory domain of p63 by caspases enhances apoptosis. **Proc. Natl. Acad. Sci. U. S. A.** 104 (2007) 10871-10876.
- [8] Muskhelishvili L, Latendresse J R, Kodell R L, et al. Evaluation of cell proliferation in rat tissues with BrdU, PCNA, Ki-67(MIB-5) immunohistochemistry and in situ hybridization for histone mRNA. **Journal of Histochemistry & Cytochemistry** 51 (2003) 1681-1688.
- [9] Sams R L, Couch L H, Miller B J, et al. Basal cell proliferation in female SKH-1 mice treated with alpha- and beta-hydroxy acids. **Toxicol. Appl. Pharmacol.** 175 (2001) 76-82.
- [10] Soma T, Tsuji Y, Hibino T. Involvement of transforming growth factor-beta 2 in catagen induction during the human hair cycle. **J. Invest. Dermatol.** 118 (2002) 993-997.
- [11] Bodo E, Tobin D J, Kamenisch Y, et al. Dissecting the impact of chemotherapy on the human hair follicle - A pragmatic in vitro assay for studying the pathogenesis and potential management of hair follicle dystrophy. **Am. J. Pathol.** 171 (2007) 1153-1167.
- [12] Sharov A A, Siebenhaar F, Sharova T Y, et al. Fas signaling is involved in the control of hair follicle response to chemotherapy. **Cancer Res.** 64 (2004) 6266-6270.
- [13] Nakashima-Kamimura N, Nishimaki K, Mori T, et al. Prevention of chemotherapy-induced alopecia by the anti-death FNK protein. **Life Sci.** 82 (2008) 218-225.
- [14] Duvic M, Lemak N A, Valero V, et al. A randomized trial of minoxidil in chemotherapy-induced alopecia. **J. Am. Acad. Dermatol.** 35 (1996) 74-78.
- [15] Trempus C S, Morris R J, Ehinger M, et al. CD34 expression by hair follicle stem cells is required for skin tumor development in mice. **Cancer Res.** 67 (2007) 4173-4181.
- [16] Kim S Y, Cho H J, Kim D S, et al. Differential expression of p63 isoforms in normal skin and hyperproliferative conditions. **J. Cutan. Pathol.** 36 (2009) 825-830.
- [17] Muller-Rover S, Rossiter H, Paus R, et al. Overexpression of Bcl-2 Protects from Ultraviolet B-Induced Apoptosis but Promotes Hair Follicle Regression and Chemotherapy-Induced Alopecia. **Am. J. Pathol.** 156 (2000) 1395-1405.
- [18] . Fiuraskova M, Brychtova S, Kolar Z, et al. Expression of beta-catenin, p63 and CD34 in hair follicles during the course of androgenetic alopecia. **Arch. Dermatol. Res.** 297 (2006) 143-146.
- [19] Ohnemus U, Unalan M, Handjiski B, et al. Topical estrogen accelerates hair regrowth in mice after chemotherapy-induced alopecia by favoring the dystrophic catagen response pathway to damage. **J. Invest. Dermatol.** 122 (2004) 7-13.

Legends of figures

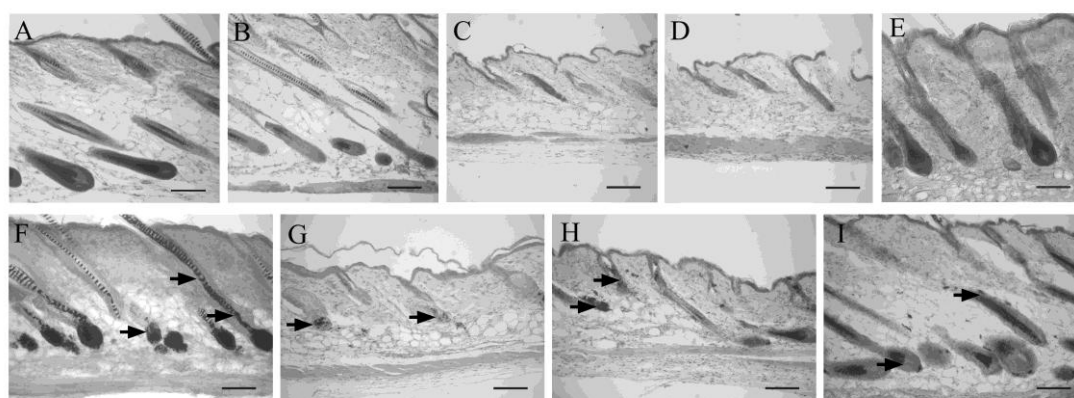
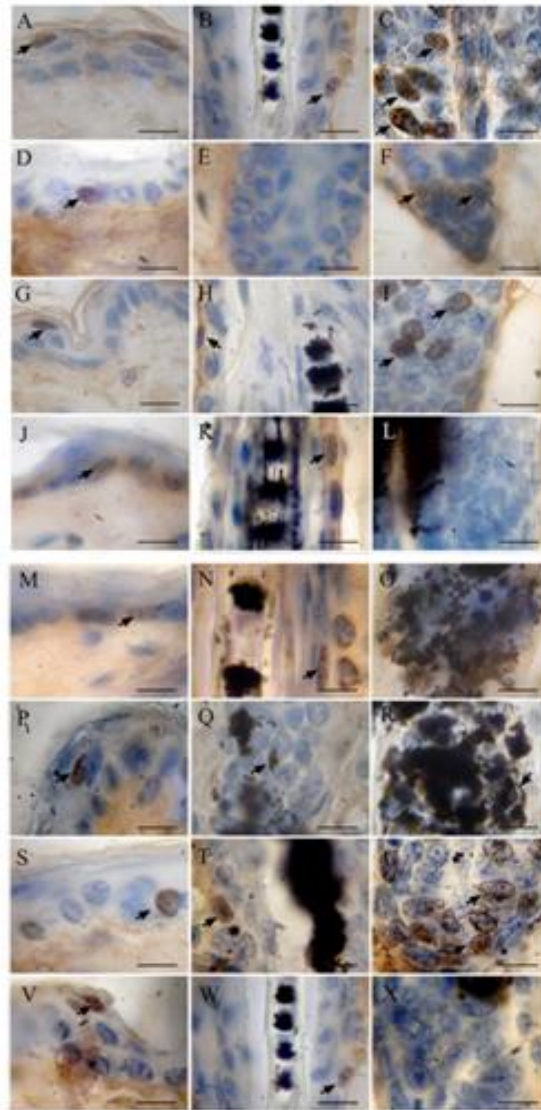


Figure 1. Representative of histological sections at day 10, 15, 20, 25 post depilation. A, B, C, D are control group, they are histopathologic sections at day 15, 20, 25, 10 post depilation in turn. F, G, H, I are CYP injection group, they are histopathologic sections on day 15, 20, 25, 30 post depilation in turn. A and I are skin histological sections of middle anagen, B and F are histological sections of catagen, D and G are histological sections of telogen, E and H are histological sections of early anagen. 5 days after CYP injection hair follicles were dystrophic; they shed 10 days after injection. Hair follicles recovered within 15 days. Arrows indicated clumping of melanin and abnormally dilated hair canals containing the tortured hair shaft (F)19. Destroyed hair

bulbs and smeared melanin appeared in telogen (G). Ectopic distribution of melanin as a sign of dystrophy can be seen in H and I. (bars: 200 um)



Y

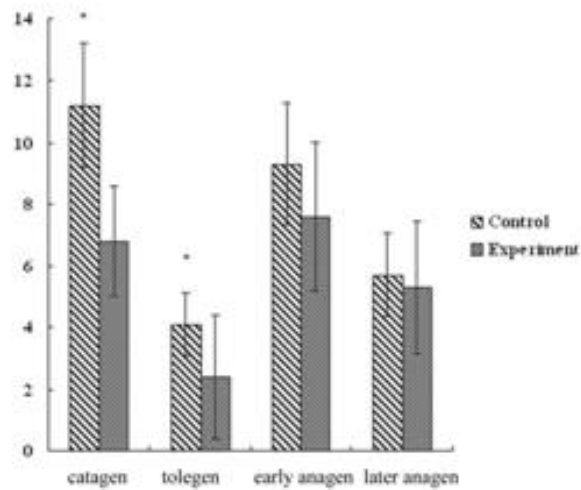


Figure 2. Cell proliferation of hair follicle and epidermis of control group is shown in Figure 2A-L). Each rank is different part of skin, first rank is epidermis, second is middle part of hair follicle, and third is hair bulb. Histological sections of A, B and C are mouse skin at 15 days post depilation (catagen), BrdU-positive cells were observed in hair bulb. Few cells were labeled in the skin sections of 20 days post depilation (D, E, and F). Histological sections of G, H and I are mouse skin at 25 days post depilation (new anagen). Histological sections of J, K and L are 10 days post depilation (later anagen). (Bars: 10 um)

Cell proliferation of hair follicle and epidermis of CYP-injection group is shown in Figure Figure 2M-X. Each rank is different part of skin, first rank is epidermis, second is middle part of hair follicle, and third is hair bulb. Histological sections of M, N and O are mouse skin at 15 days post depilation (catagen); BrdU-positive cells were destroyed in hair bulb. Few dystrophic cells were labeled in the skin sections at 20 days post depilation (P, Q, and R), most of labeled cells resided in the hair bulbs. Histological sections of S, T and U are 25 days post depilation (new anagen). Histological sections of V, W and X are mouse skin at 30 days post depilation (later anagen). (Bars: 10 um). Average number of BrdU-positive cells per hair follicle is shown in Figure 2Y. There is significant difference between control and CYP injection groups in catagen and telogen. ($P < 0.05$)

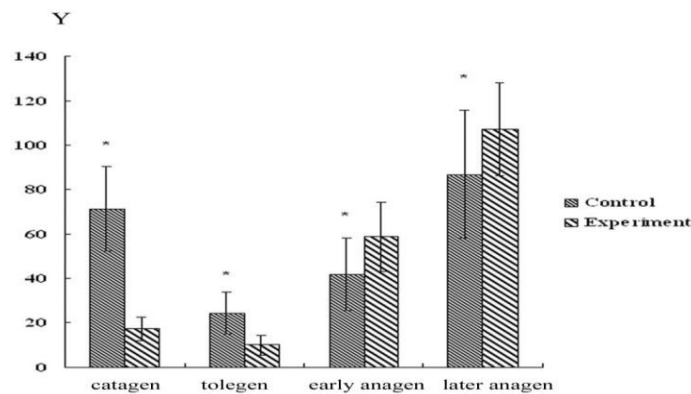
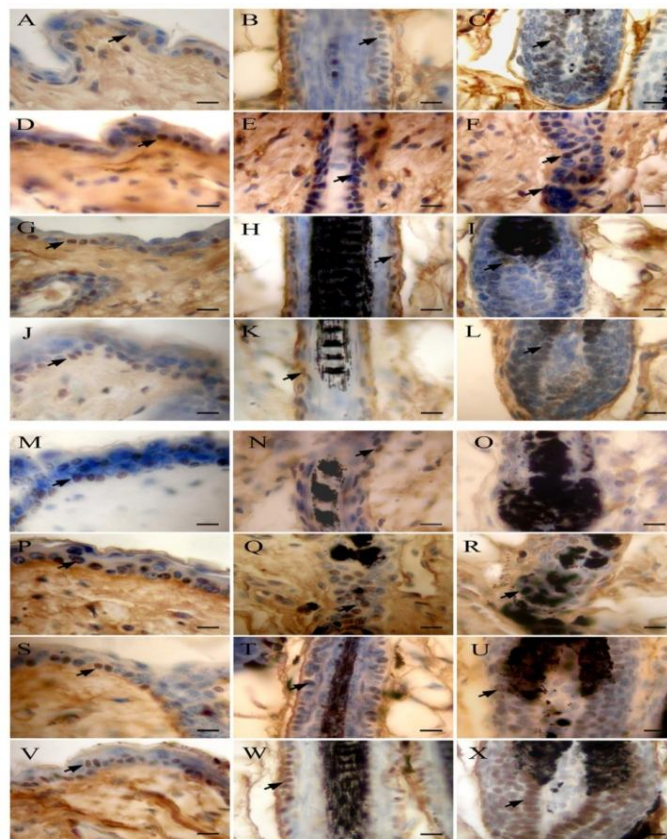


Figure 3. p63-positive cells of control groups (Figure 3A-L). Each rank is different part of skin, first rank is epidermis, second is middle part of hair follicle, and third is hair bulb. Histological sections of A, B and C are mouse skin at 15 days post depilation (catagen), most positive cells were observed in hair bulb. Labeled cells also resided in the interfollicular epithelium between hair bulb and dermal papilla at 20 days post depilation (D, E, and F). Histological sections of G, H and I are mouse skin at 25 days post depilation (new anagen), less cells were labeled in this growth phase. Histological sections of J, K and L are 10 days post depilation (later anagen). (Bars: 20 um)

P63-positive cells in CYP-injection groups (Figure 3M-X). Each rank is different part of skin, first rank is epidermis, second is middle part of hair follicle, and third is hair bulb. Histological sections of M, N and O are 15 days post depilation (catagen). P63- positive cells were destroyed in hair bulb. Most labeled cells of hair follicle were destroyed in the skin sections at 20 days post depilation (P, Q, and R) especially in the hair bulbs. Histological sections of S, T and U are mouse skin at 25 days post depilation (new anagen). Histological sections of V, W and X are mouse skin at 30 days post depilation (later anagen), at this growth phase p63 recovered. (Bars: 20 um). Average number of p63-positive cells per hair follicle is shown in Figure 3Y. Numbers of p63-positive cells were significantly different between control and CYP injection groups in all of four growth phases. ($P < 0.05$)

Jinhuan Zong “P63, a marker of the proliferative basal layers of skin epithelia and the hair follicle.” IOSR Journal of Engineering (IOSRJEN), vol. 08, no. 9, 2018, pp. 14-20.